

# MFT 1730 & 1835 – Pairing to PC/Laptop

## Application Note

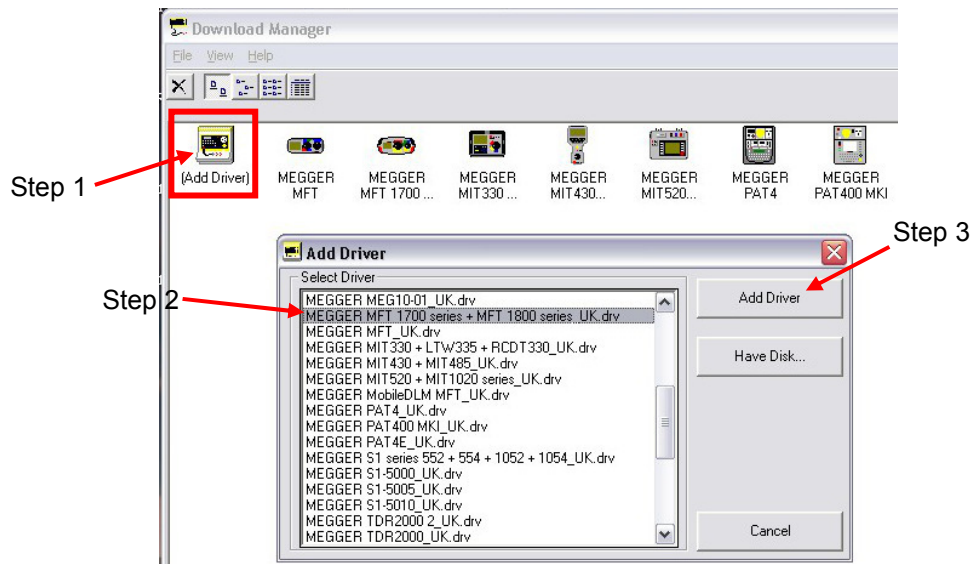
---

1. Turn your MFT 'on' to any setting, and turn the smaller dial to the settings ('spanner') position to enter the setup mode.
2. Press the  $\leftrightarrow$  button on the MFT until you see 'StR' appear on the display. At this point you should ensure that 'bt' or 'IN,bt' is displayed in larger letters on the main part of the MFT's display.

If this is not the case use the right-hand **TEST & Lock** buttons as **UP/DOWN** arrows to scroll through the options to select your chosen communication method.

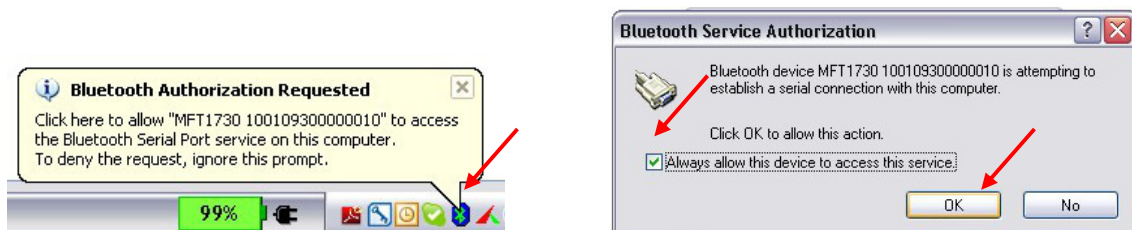
  - IN = Internal Only
  - Bt = Bluetooth Only
  - IN,bt = Internal and Bluetooth
3. Once you have selected your chosen storage/communication location, press the left hand Bluetooth/Lock button once to save this as your preference. The Lock icon will now stop flashing in the upper left hand corner of the MFT's display and disappear to indicate your preference has been saved.
4. You will now need to press the  $\leftrightarrow$  arrow once to display the 'bt' setup option.
5. Press the right hand TEST Button once, a padlock logo will now appear flashing in the top left hand corner of the display. To enter the Bluetooth pairing mode you will now need to push and hold down the left hand Bluetooth/Lock button until you see two oscillating chevrons ( <> ) appear on the display and then release. The Bluetooth pairing will fill the first empty slot available, if there are no empty slots left it will overwrite the slot shown currently on the MFT's display. If all slots are currently in use and you wish to add another, display on screen the slot that you want to overwrite. To do this use the right-hand **TEST & Lock** buttons as **UP/DOWN** arrows to scroll through all 5 slots.
6. From your PC/Laptop run the 'Add Bluetooth Device' wizard.
  - You will be prompted during the pairing process to enter your passkey, enter '**1234**'
  - During the pairing process you may also be prompted to enable the 'Bluetooth Serial Port'. Ensure this option is chosen if you are given this option.
7. Once you have clicked 'Finish' on the wizard on the PC/Laptop the pairing process will now be complete and your PC/Laptop pairing code will be displayed on the MFT. You can now turn the dial and leave the settings ('Spanner') position on the MFT.

- Open Megger Download Manager; you can find this on the following path: Start > Programs > Megger Download Manager > Megger Download Manager.exe.
- If you have not already added the MFT to the list of devices click the [Add Driver] icon as seen below and choose the Megger MFT1700 Series. Then Click 'Add Driver'.



- To test the download functionality, you can now right click on the 'Megger MFT1700 Series' icon and click 'Download'. Now turn the smaller dial to the 'SND' facility, then push and hold the Bluetooth/Lock button on the left hand side of the MFT until you see the alternating chevrons <> on the display.

You should now be prompted to authorise the Bluetooth connection. Double click on the Bluetooth icon in your taskbar or the speech bubble and tick the check box and click 'OK' as seen below from the authorisation window.



- You may have to resend the data by pushing and holding the Bluetooth/lock button again until you see the message box below appear. Please take note of this COM number for use later in this walkthrough.

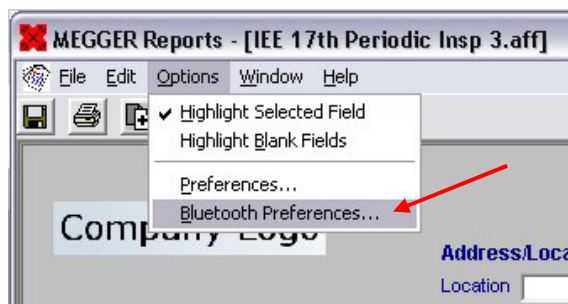


12. The Megger Download Manager 'Download' window should now flash the 'data' box and the data will be transferred. Once the download is complete a new window will open containing a file 'New Download.csv' this file contains your results and is viewable in 'CSV Viewer'.

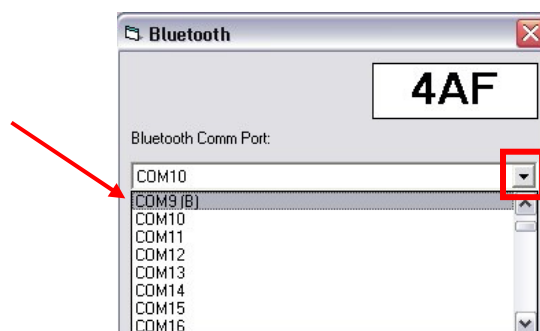
### Megger Powersuite Pairing

Once you have completed the previous steps and if you are using Megger Powersuite you will need to create a pairing using the process below.

1. Open Megger Powersuite and generate a certificate either using the Wizard on the menu bar, or by using the 'certificate manager' e.g. the IEE 17<sup>th</sup> Periodic Inspection certificate.
2. From the 'Megger Reports' window containing the certificate; select the 'Options' menu and choose 'Bluetooth Preferences....'



3. You will now need to select the correct COM port from the drop down selection field, select the COM number noted in step 13 of the walkthrough, then click 'OK'.



Your Bluetooth pairing with Megger Powersuite is now complete ready for you to import your results to the certificate of choice.