

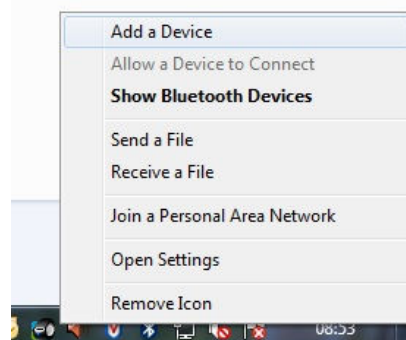
MFT 1730 & 1835 – Pairing to PC/Laptop- Windows 7

Application Note

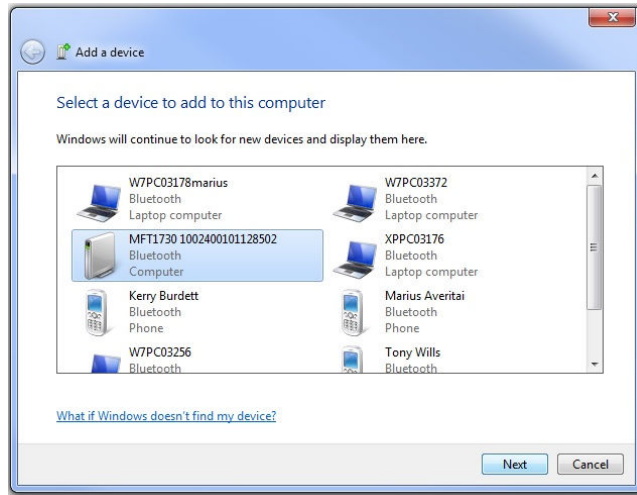
1. Turn your MFT 'on' to any setting, and turn the smaller dial to the settings ('spanner') position to enter the setup mode.
2. Press the \leftrightarrow button on the MFT until you see 'StR' appear on the display. At this point you should ensure that 'bt' or 'IN,bt' is displayed in larger letters on the main part of the MFT's display.

If this is not the case use the right-hand **TEST & Lock** buttons as **UP/DOWN** arrows to scroll through the options to select your chosen communication method.

- IN = Internal Only
 - Bt = Bluetooth Only
 - IN,bt = Internal and Bluetooth
3. Once you have selected your chosen storage/communication location, press the left hand Bluetooth/Lock button once to save this as your preference. The Lock icon will now stop flashing in the upper left hand corner of the MFT's display and disappear to indicate your preference has been saved.
 4. You will now need to press the \leftrightarrow arrow once to display the 'bt' setup option.
 5. Press the right hand TEST Button once, a padlock logo will now appear flashing in the top left hand corner of the display. To enter the Bluetooth pairing mode you will now need to push and hold down the left hand Bluetooth/Lock button until you see two oscillating chevrons (<>) appear on the display and then release. The Bluetooth pairing will fill the first empty slot available, if there are no empty slots left it will overwrite the slot shown currently on the MFT's display. If all slots are currently in use and you wish to add another, display on screen the slot that you want to overwrite. To do this use the right-hand **TEST & Lock** buttons as **UP/DOWN** arrows to scroll through all 5 slots.
 6. Once the MFT is in pairing mode, from your PC/Laptop run the 'Add a Device' wizard. This can be found by right clicking on the Bluetooth icon in the bottom right hand side of the screen and selecting 'Add a device'



7. The below window will appear, once it has found your MFT simply select it and click 'next'.



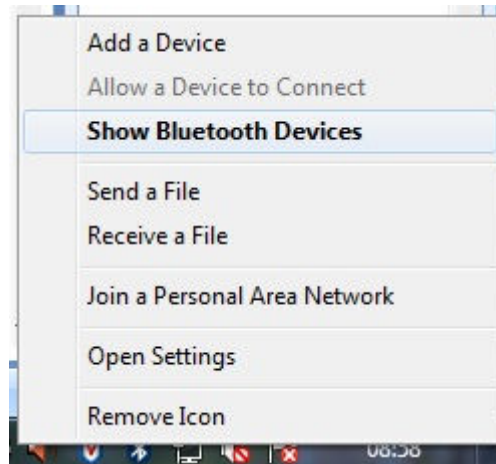
8. The wizard will now ask you to enter a pairing code for the MFT, by default; it will always be '1234'. Simply enter this code and click next.



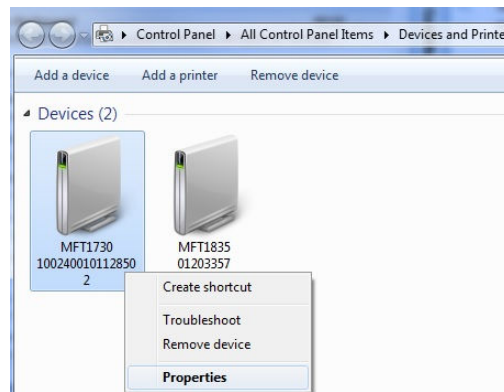
9. You should now receive a message saying that the device has been successfully paired:



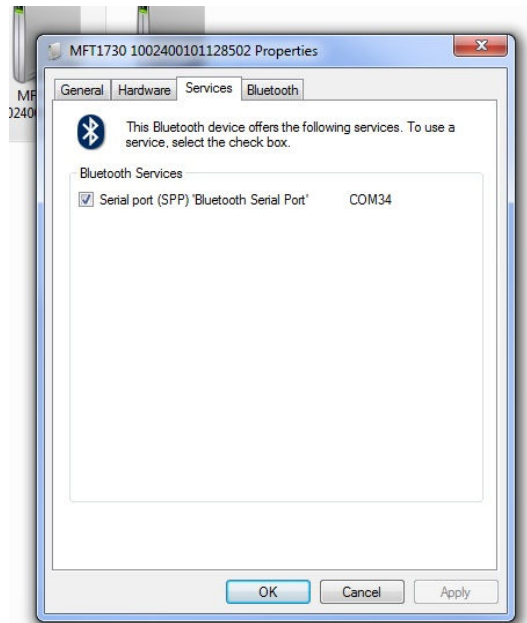
10. You now need to find out which 'Com port' the MFT is going to use to download, to do this firstly right click on the Bluetooth icon in the bottom left hand side of the screen and select 'Show Bluetooth Devices'.



11. Now find your paired MFT in the list of devices and select 'Properties', as shown in the windows below;



12. You should now see a few tabs, one of them should be called 'Services', select this tab to find out which COM port the MFT has been paired to, it may take a few second for the number to appear. As you can see in this instance, it has paired to COM34.



13. Now that you have found out which COM port the MFT is paired to, you will be able to download from the instrument.

UK
Archcliffe Road Dover
CT17 9EN England
T +44 (0) 1304 502101
F +44 (0) 1304 207342
UKsales@megger.com

UNITED STATES
4271 Bronze Way
Dallas TX 75237-1019 USA
T 800 723 2861 (USA only)
T +1 214 333 3201
F +1 214 331 7399
USsales@megger.com

OTHER TECHNICAL SALES OFFICES
Valley Forge USA, College Station USA, Sydney
AUSTRALIA, Täby SWEDEN, Ontario CANADA,
Trappes FRANCE, Oberursel GERMANY, Aargau
SWITZERLAND, Kingdom of BAHRAIN, Mumbai
INDIA, Johannesburg SOUTH AFRICA, Chonburi
THAILAND

CERTIFICATION ISO
Registered to ISO 9001:2008 Cert. no. Q 09250
Registered to ISO 14001:2004 Cert. no. EMS 61597

www.megger.com
Megger is a registered trademark